

Level 1: SILLY



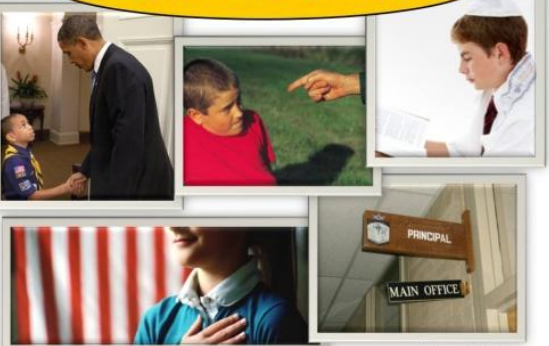
Level 2: Fun, not silly



Level 3: Kind of serious



Level 4: Serious



Silly to Serious Cards and Panels

These illustrated panels and cards are to help young people with Asperger's and other autism spectrum disorders to understand unwritten rules of formality in diverse social contexts.

The panels can be used to make a good bulletin board for classrooms. Otherwise, they are used to teach the concepts and as a reference when the cards are being used.

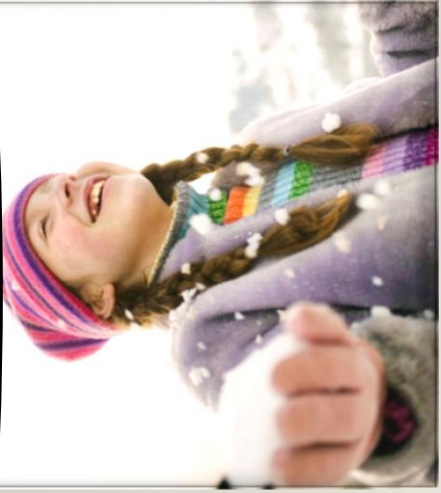
Further explanation and all of the downloadable files for the cards and the panels are located at the website at this link: <http://bit.ly/GW7uuG>



Created by Joel Shaul, LCSW

Joel Shaul provides workshops nationwide on the topic of social skills training for children on the autism spectrum. Learn more: <http://bit.ly/zGDQCi>

Level 1: SILLY



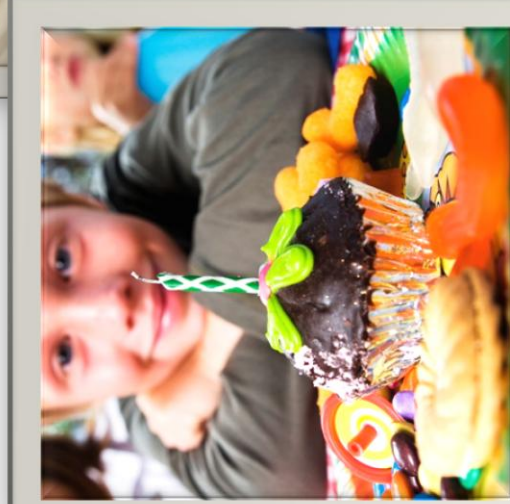
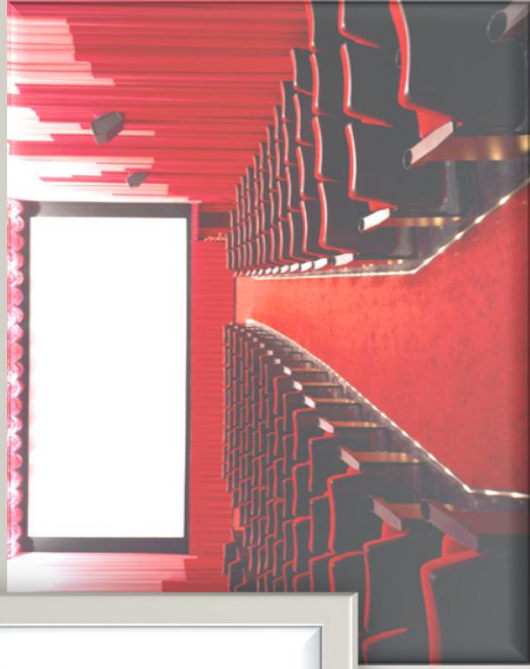
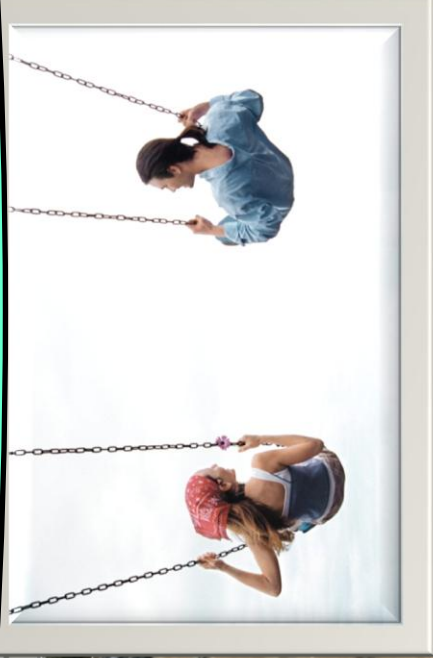
Level 1 can look and sound like:

Voice can be loud

Laughing a lot

Moving around a lot

Level 2: Fun, not silly



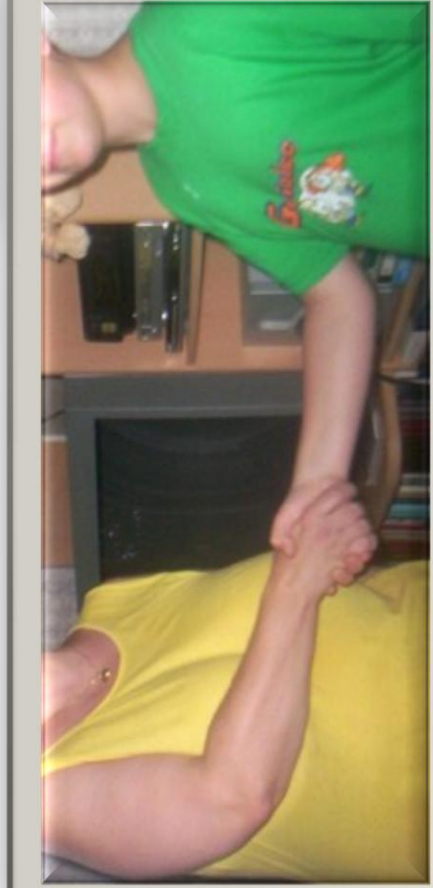
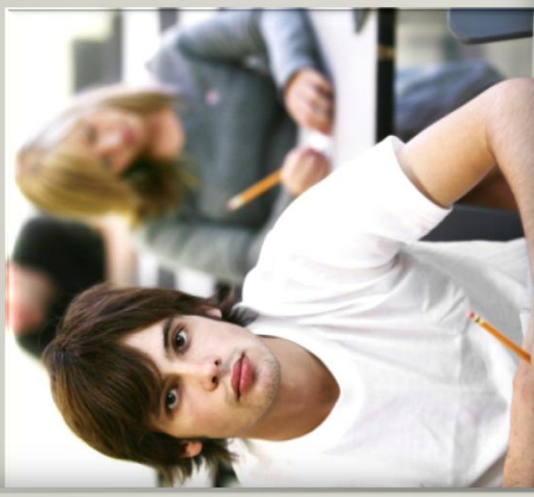
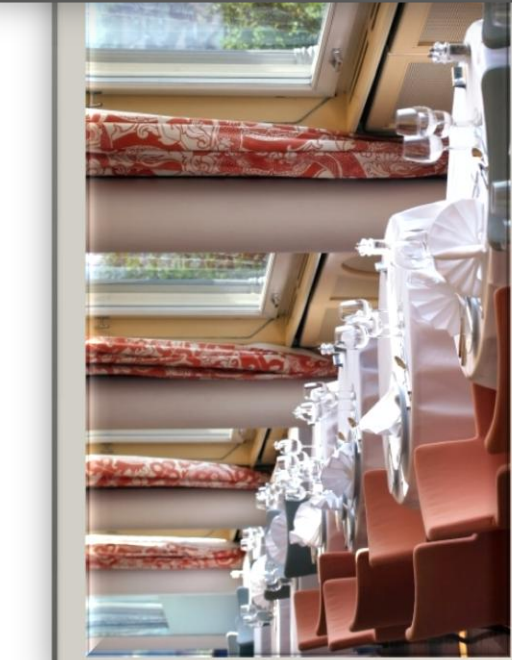
Level 2 can look and sound like:

Fun but with more rules

Not so close,
less touching

Moving around less

Level 3: Kind of serious



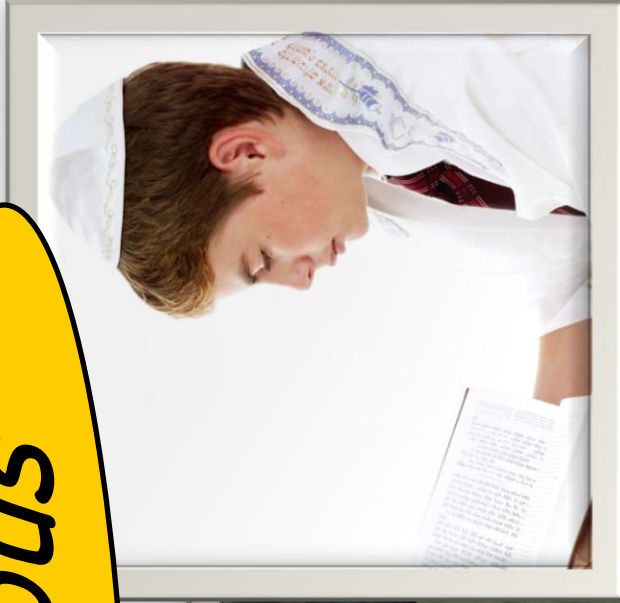
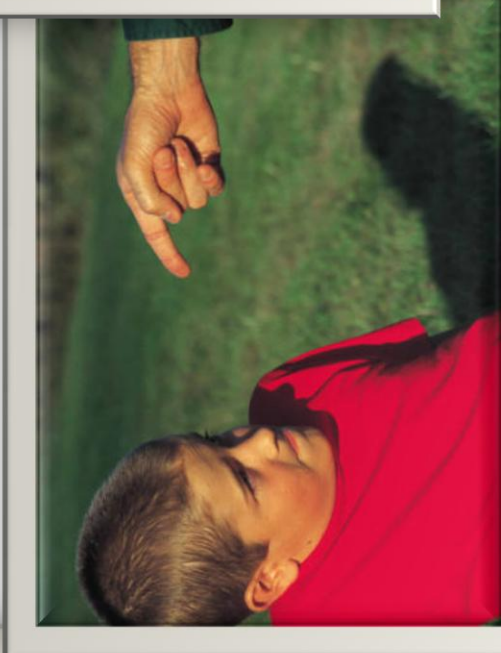
Level 3 can look and sound like:

Quieter voice.
Polite words.

Avoid laughing

Body more still

Level 4: Serious



Level 4 can look and sound like:

Very polite words

Follow adult rules

Ask for break if you
need to move a lot